



For "NEWTON" electronic labels

SOLUM

Solution provider.

In this catalog, you will find the widest assortment of supports designed specifically for the "NEWTON ESL SOLUM"

All brackets are specifically designed for being applied with each model of electronic label.



ESL SUPPORTS

CATALOGUE

20
23

SMARTDIGIT CATALOGUES

See our “accessories” and “shelf profiles” catalogs where you will find the widest assortment of designed items specifically for solum newton electronic labels.



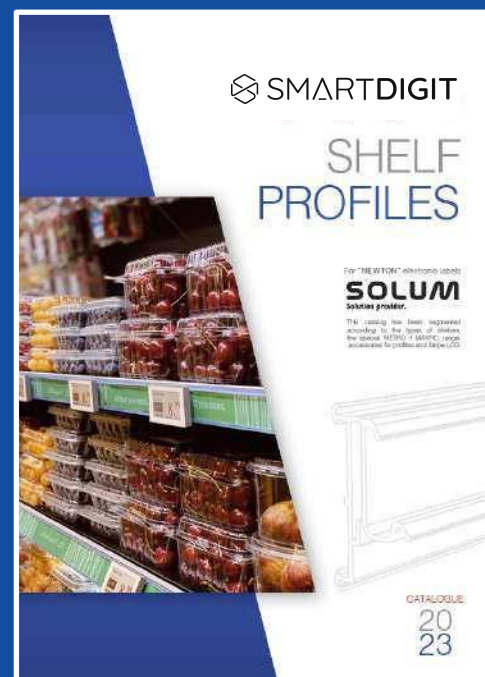
ACCESSORIES

In this catalog you will find the widest assortment of ACCESSORIES compatible with the supports and boxes designed for the “NEWTON ESL SOLUM”.

These accessories will allow you, among other things, to vary the height and inclination when implanting your labels, fasten them on wooden, metal or glass shelves, fix them in baskets, boxes or on edges of any thickness, and hang them on tubes and rods, among others. Applications. For large format labels, you can hang them on suspended profiles, place them on telescopic tubes or fix them with magnets on metal surfaces.

The perfect combination of accessories with injection parts guarantees that there will be no product in your store where you cannot mark its price with SOLUM electronic labels.

If the accessory you need is not in this chapter, please consult us and we will develop it in a short space of time.



SHELF PROFILES

Our catalog represents a large assortment of profiles for the different types of shelves on the market.

If the profile you need is not in this catalog, we can develop it in a short period of time.

We keep a permanent stock of all referenced models in lengths of 985 and 1315 mm and in transparent and black COLORS.

All our profiles are made of a single piece; that is, they are inserted directly into the front of the shelf without requiring any assembly or other manipulations.

INDEX

SUPPORTS
FOR NEWTON
ELECTRONIC LABELS

PAGE

04 TO 08

OVS: Supports for Newton ESL Solum Small format

10 TO 17

OVM: Supports for Newton ESL Solum Medium format

18 TO 18

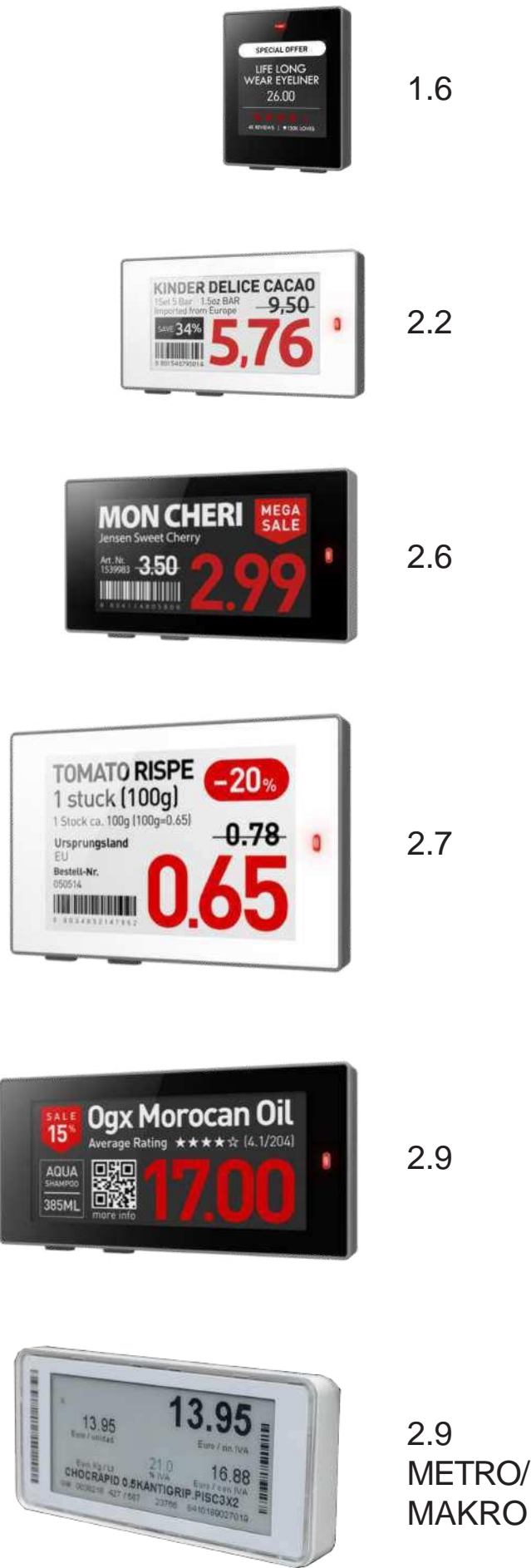
Special concepts for electronics

19 TO 19

Accessories for Newton ESL Solum

20 TO 21

Promo system



OVS

SUPPORTS FOR "NEWTON ESL SOLUM"

SMALL FORMAT

- FOR SOLUM 1.6 LABELS
- FOR SOLUM 2.2, 2.6 AND 2.7 LABELS
- FOR SOLUM 2.9 LABELS
- FOR SOLUM 2.9 "METRO / MAKRO" LABELS
- MAGNETIC SUPPORT FOR SOLUM 2.2, 2.6 ,2.7, 2.9 AND 4.2 LABELS
- MAGNETIC SUPPORT FOR SOLUM 1.6 LABELS

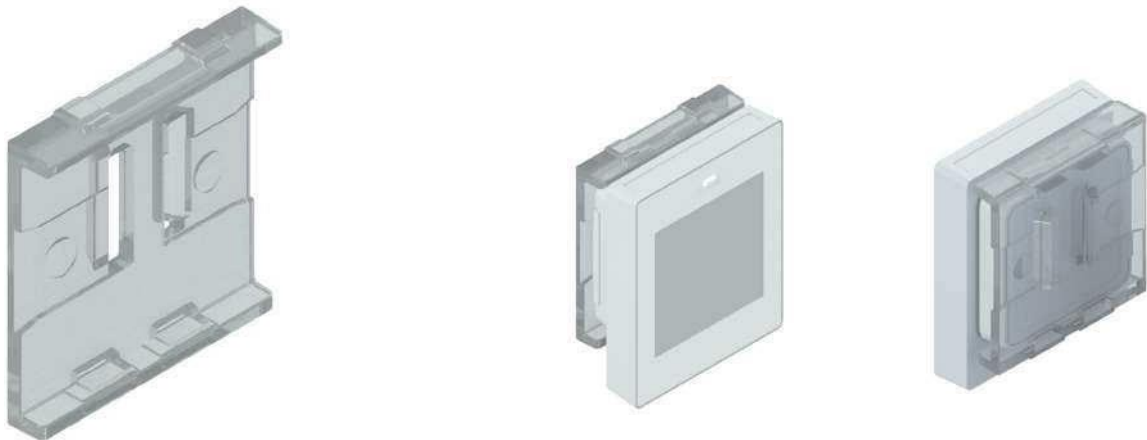
SUPPORTS FOR “NEWTON ESL SOLUM”
SMALL FORMAT



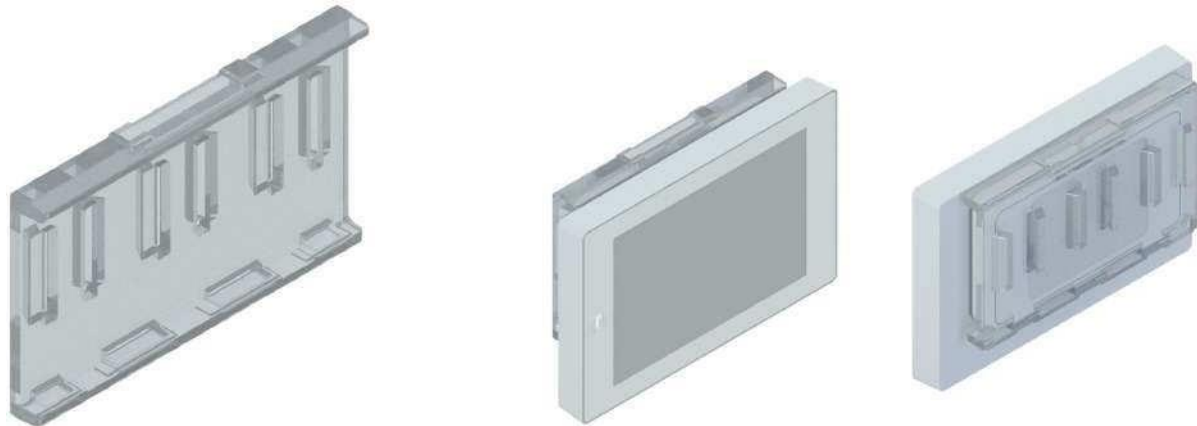
CODE	LABELS	COLOR	MATERIAL
01000-00	1.6	Transparent / Black	Polycarbonate
01020-00	2.2, 2.6 & 2.7	Transparent / Black	Polycarbonate
01030-00	2.9	Transparent / Black	Polycarbonate

Box units: 100 supports.
Minimum order: 1 box.

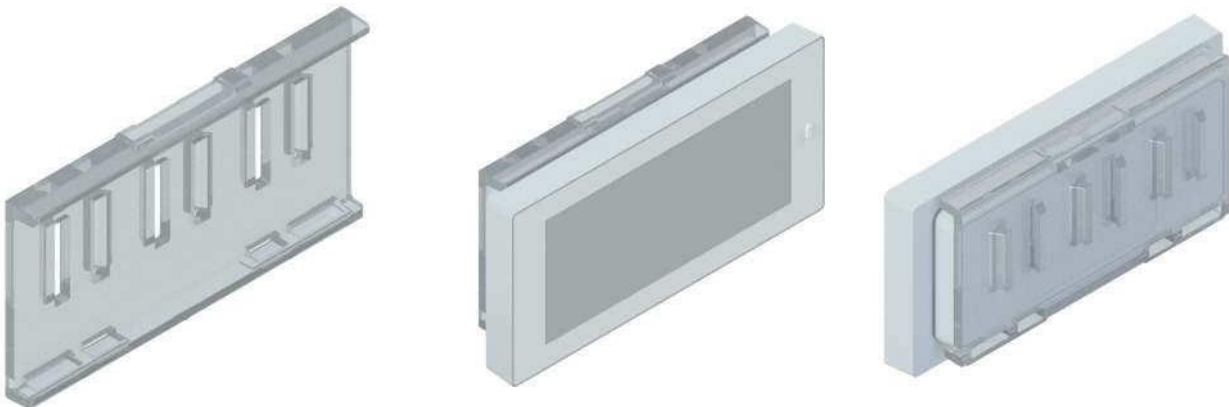
01000-00 FOR SOLUM 1.6 LABELS



01020-00 FOR SOLUM 2.2, 2.6 AND 2.7 LABELS



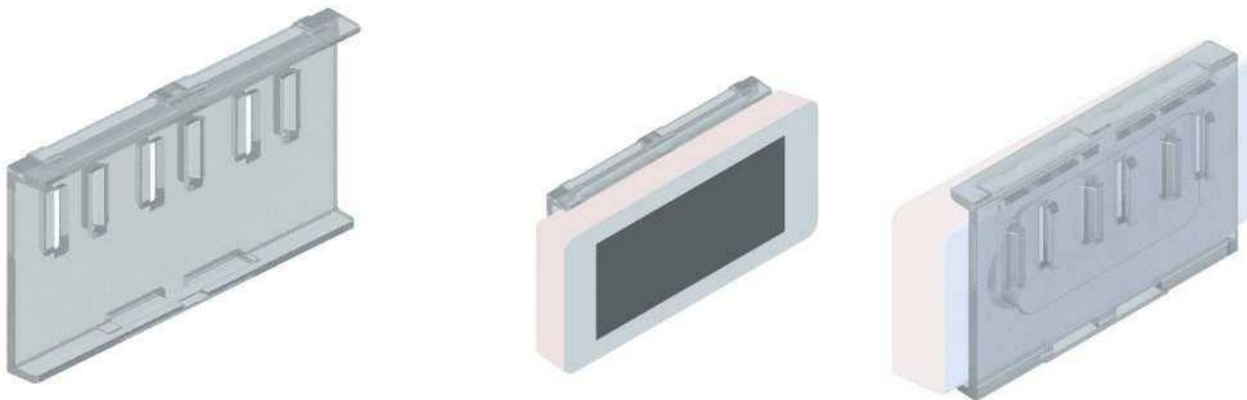
01030-00 FOR SOLUM 2.9 LABELS



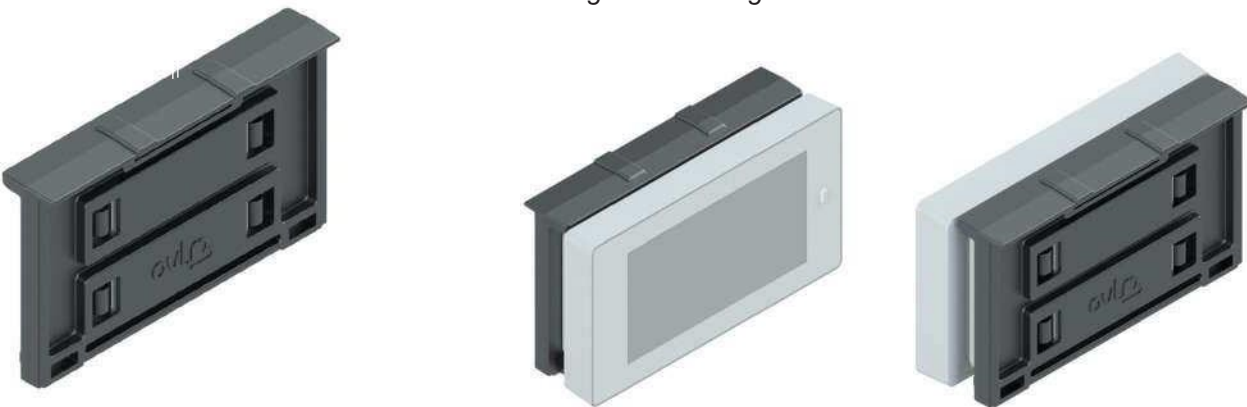
CODE	LABELS	COLOR	MATERIAL
01035-00	2.9	Transparent	Polycarbonate
01072-05	2.2 / 2.6 / 2.7 / 2.9 / 4.2	Black	ABS
01073-05	2.2 / 2.6 / 2.7 / 2.9 / 4.2	Black	ABS

Box units: 100 supports.
Minimum order: 1 box.

01035-00 FOR SOLUM 2.9 “METRO/MAKRO” LABELS



01072-05 MAGNETIC SUPPORT FOR SOLUM 2.2, 2.6, 2.7 & 4,2 LABELS
**With two magnets and alingner on the back.*



01073-05 MAGNETIC SUPPORT FOR SOLUM 2.2, 2.6, 2.7 & 4,2 LABELS
**With two magnets without alingner on the back.*



SUPPORTS FOR "NEWTON ESL SOLUM"
SMALL FORMAT

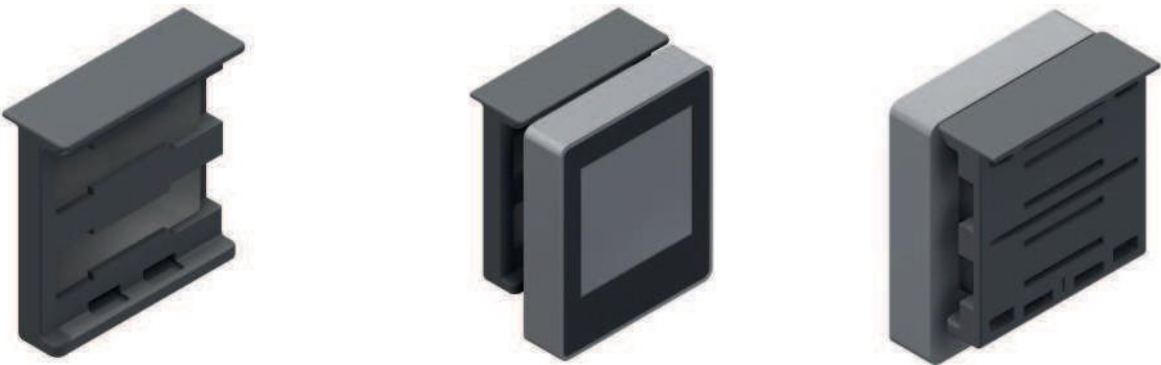
OVS

CODE	LABELS	COLOR	MATERIAL
01082-05	1.6	Black	ABS
01083-05	1.6	Black	ABS

Box units: 100 supports.
Minimum order: 1 box.

01082-05 MAGNETIC SUPPORT FOR SOLUM 1.6 LABELS

**With two magnets and alingner on the back.*



01083-05 MAGNETIC SUPPORT FOR SOLUM 1.6 LABELS

**With two magnets without alingner on the back.*



The Newton System



SOLUM
Solution provider.



4.2



4.3



4.3
INDUSTRIAL



6.0



7.5

OVM

SUPPORTS FOR "NEWTON ESL SOLUM"

MEDIUM FORMAT

- SMALL SIZE SUPPORT FOR SOLUM 4.2 LABELS
- FLAT SUPPORT STANDARD SIZE FOR SOLUM 4.2 LABELS
- FLAT SUPPORT STANDARD SIZE FOR SOLUM 4.2 LABELS
- BASIC MODEL INCLINED SUPPORT FOR SOLUM 4.2 LABELS
- INCLINED SUPPORT WITH ADHESIVE STRIPS ON THE BASE FOR SOLUM 4.2 LABELS
- INCLINED SUPPORT WITH MAGNETIC STRIPS ON THE BASE FOR SOLUM 4.2 LABELS
- INCLINED SUPPORT WITH SUCTION CUP ON THE BASE FOR SOLUM 4.2 LABELS
- INCLINED SUPPORT WITH GUIDE AND SCREW ON THE BASE FOR SOLUM 4.2 LABELS (SPECIAL "EL CORTE INGLÉS")
- SUPPORT FOR SOLUM 4.3 LABELS
- SUPPORT FOR SOLUM 4.3 INDUSTRIAL LABELS
- SUPPORT FOR SOLUM 4.3 INDUSTRIAL LABELS
- REDUCE SIZE SUPPORT FOR SOLUM 6.0 AND 7.5 LABELS IN CRYSTAL-COLORED POLYCARBONATE
- REDUCE SIZE SUPPORT FOR SOLUM 6.0 AND 7.5 LABELS IN GRAY-COLORED POLYCARBONATE
- STANDARD SIZE SUPPORT FOR SOLUM 6.0 LABELS
- STANDARD SIZE SUPPORT FOR SOLUM 7.5 LABELS

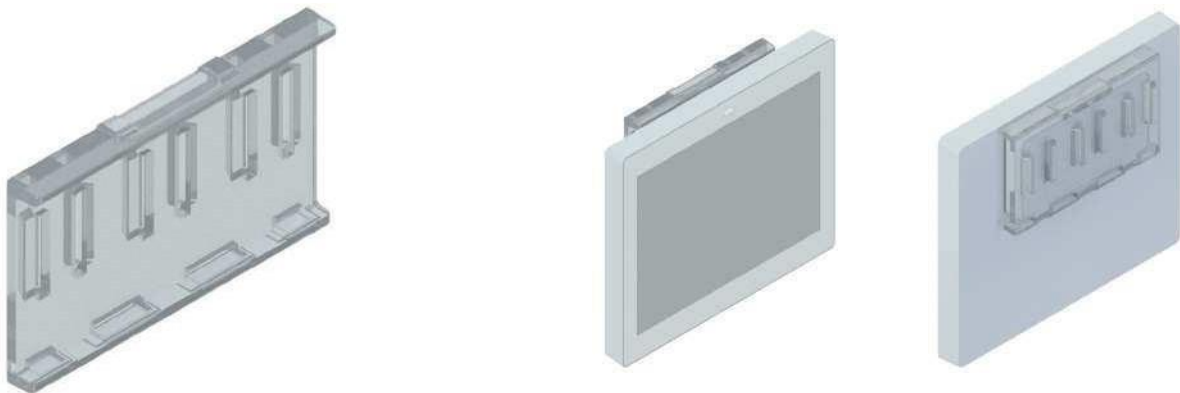
SUPPORTS FOR “NEWTON ESL SOLUM”
MEDIUM FORMAT



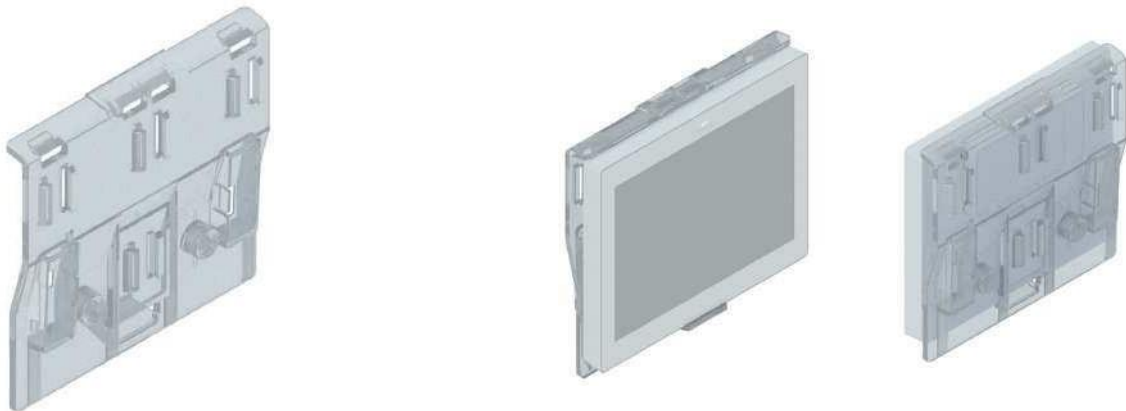
CODE	LABELS	COLOR	MATERIAL
01020-00	4.2	Transparent / Black	Polycarbonate
01090-00	4.2	Transparent / Black	Polycarbonate
01100-00	4.2	Transparent / Black	Polycarbonate

Box units: 100 supports.
Minimum order: 1 box.

01020-00 FOR SOLUM 4.2 LABELS



01090-00 FLAT SUPPORT STANDARD SIZE FOR SOLUM 4.2 LABELS



01100-00 BASIC MODEL INCLINED SUPPORT FOR FOR SOLUM 4.2 LABELS



CODE	LABELS	COLOR	MATERIAL
01110-00	4.2	Transparent / Black	Polycarbonate
01120-00	4.2	Transparent / Black	Polycarbonate
01130-00	4.2	Transparent / Black	Polycarbonate

Box units: 25 supports.
Minimum order: 1 box.

01110-00 INCLINED SUPPORT WITH ADHESIVE STRIPS ON THE BASE
FOR SOLUM 4.2 LABELS



01120-00 INCLINED SUPPORT WITH MAGNETIC STRIPS ON THE BASE
FOR SOLUM 4.2 LABELS



01130-00 INCLINED SUPPORT WITH SUCTION CUP ON THE BASE
FOR SOLUM 4.2 LABELS



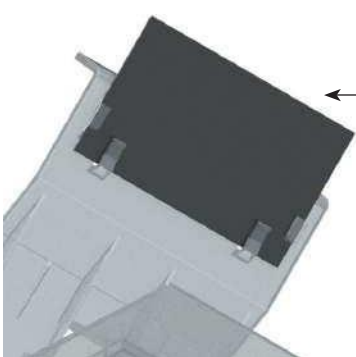
SUPPORTS FOR “NEWTON ESL SOLUM”
MEDIUM FORMAT



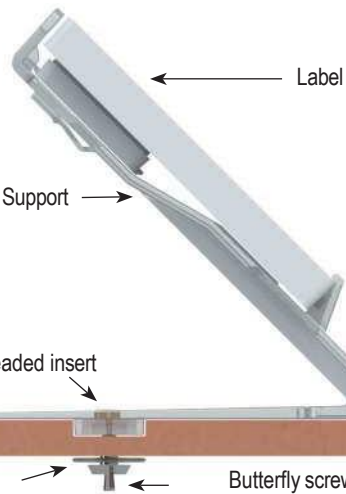
CODE	LABELS	COLOR	MATERIAL
01140-00	4.2	Transparent	Polycarbonate

Box units: 100 supports.
Minimum order: 1 box.

01040-00 INCLINED SUPPORT WITH GUIDE AND SCREW ON THE BASE
FOR SOLUM 4.2 LABELS



This support has tabs on the back to hold promotional supplements



SUPPORTS FOR “NEWTON ESL SOLUM”

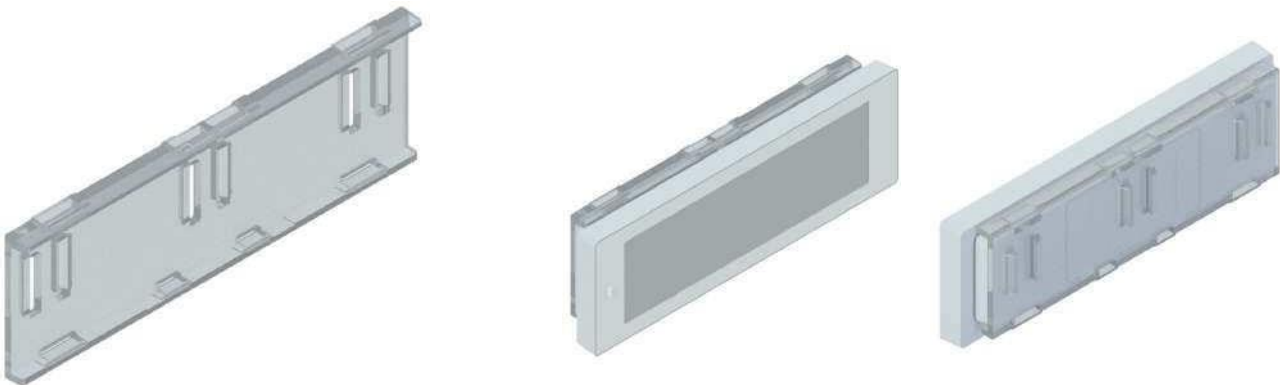
MEDIUM FORMAT



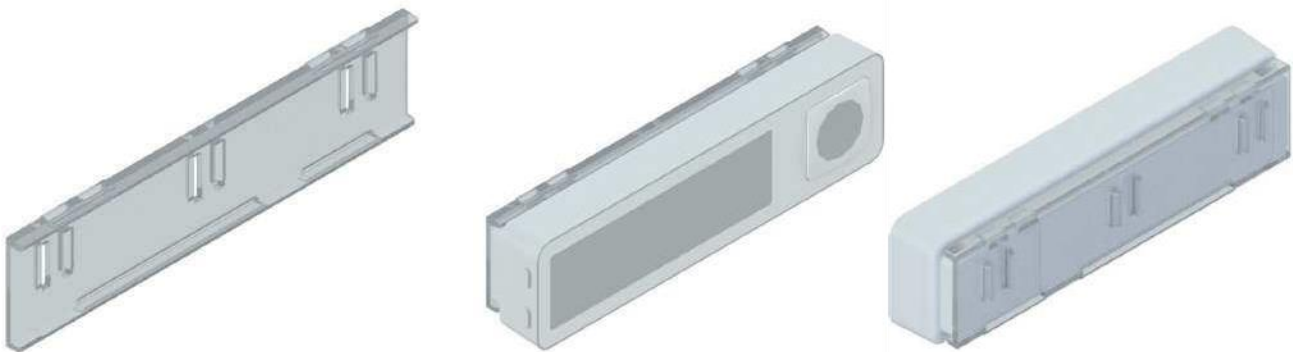
CODE	LABELS	COLOR	MATERIAL
01200-00	4.3	Transparent	Polycarbonate
01210-00	4.3 INDUSTRIAL	Transparent / GREY RAL 7012	Polycarbonate
01300-00	6.0 / 7.5	Transparent / GREY RAL 7012	Polycarbonate

Box units: 100 supports.
Minimum order: 1 box.

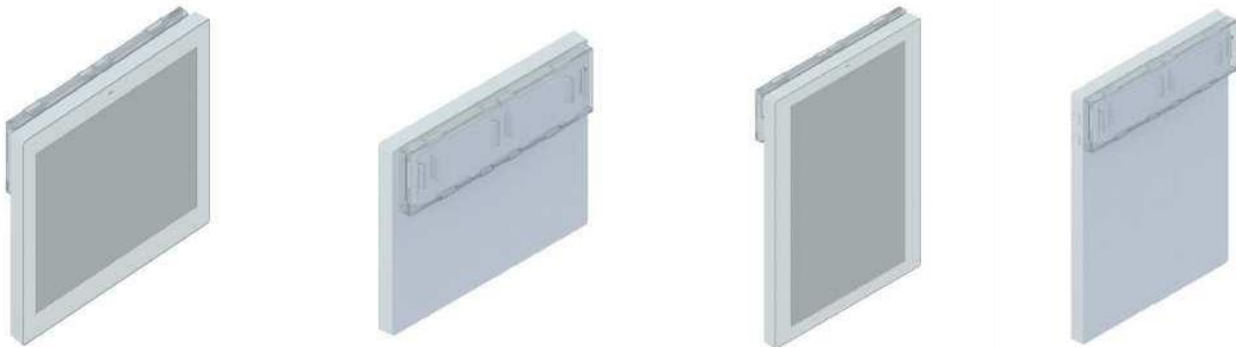
01200-00 FOR SOLUM 4.3 LABELS



01210-00 FOR SOLUM 4.3 “INDUSTRIAL” LABELS



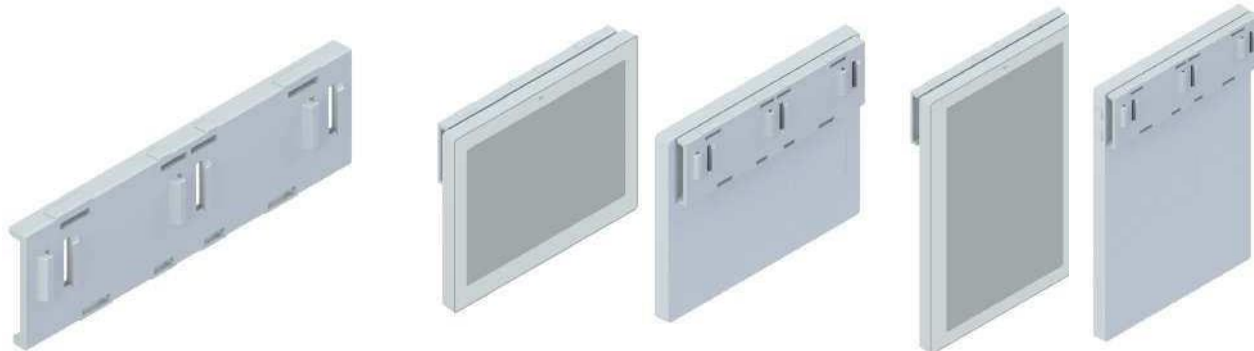
01300-00 REDUCE SIZE SUPPORT FOR SOLUM 6.0 AND 7.5 LABELS
IN CRYSTAL-COLORED POLYCARBONATE



CODE	LABELS	COLOR	MATERIAL
01300-08	6.0 / 7.5	GREY RAL 7012	Polycarbonate
01320-08	6.0	GREY RAL 7012	Polycarbonate
01360-08	7.5	GREY RAL 7012	Polycarbonate

Box units: 100 supports.
Minimum order: 1 box.

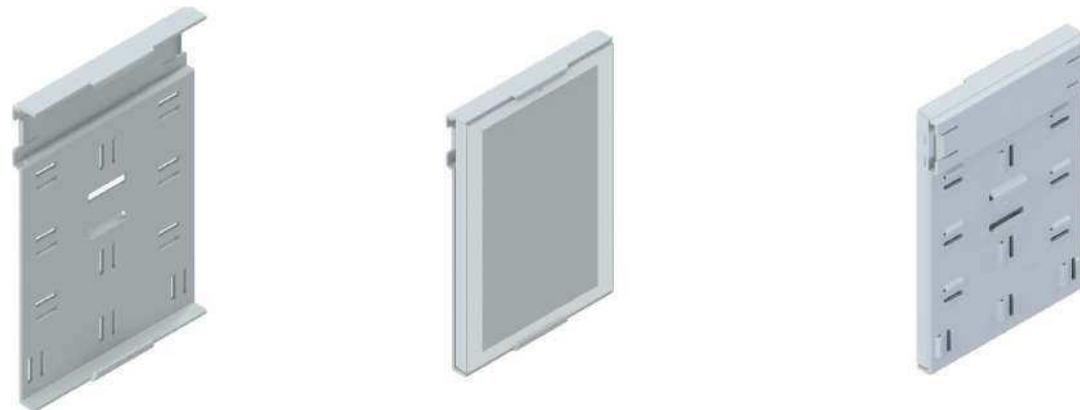
01300-08 REDUCE SIZE SUPPORT FOR SOLUM 6.0 AND 7.5 LABELS
IN GRAY-COLORED POLYCARBONATE



01320-08 STANDARD SIZE SUPPORT FOR SOLUM 6.0 LABELS



01360-08 STANDARD SIZE SUPPORT FOR SOLUM 7.5 LABELS



SUPPORTS FOR "NEWTON ESL SOLUM"
SPECIAL CONCEPTS FOR ELECTRONICS



CODE	LABELS	MATERIAL
OVM 01085 01	2.7	Polycarbonate
OVM-01095-01	4.2	Polycarbonate
OVM-01098-01	4.2	Polycarbonate
OVM-01365-01	7.5	Polycarbonate
OVM-01367-01	7.5	Polycarbonate

Consult us minimum order and price.

CONCEPTS



ACCESORIES
FOR "NEWTON ESL SOLUM"

CODE	MATERIAL
09001-15	ABS

Minimum order: 1 pc.

09001-15 ELECTRONIC LABEL REMOVER TOOL



To remove labels from the supports or adapters.

To remove labels from the rails or profiles.



UNIVERSAL CLIP TO PLACE PROMOTIONAL SUPPLEMENTS

The universal promotional supplement clip fits all media designed for each SOLUM label size with the exception of special magnetic supports (OVS 01072-05 and OVS 01073-05), and inclined support for 4.2 labels (OVM 01100-00, OVM 01110-00, OVM 01120-00, OVM 01130-00, and OVM 01140-00).

02405-00 PROMO HOLDER CLIP



02415-00 CONNECTOR WITH ADHESIVE



PROMO SYSTEM

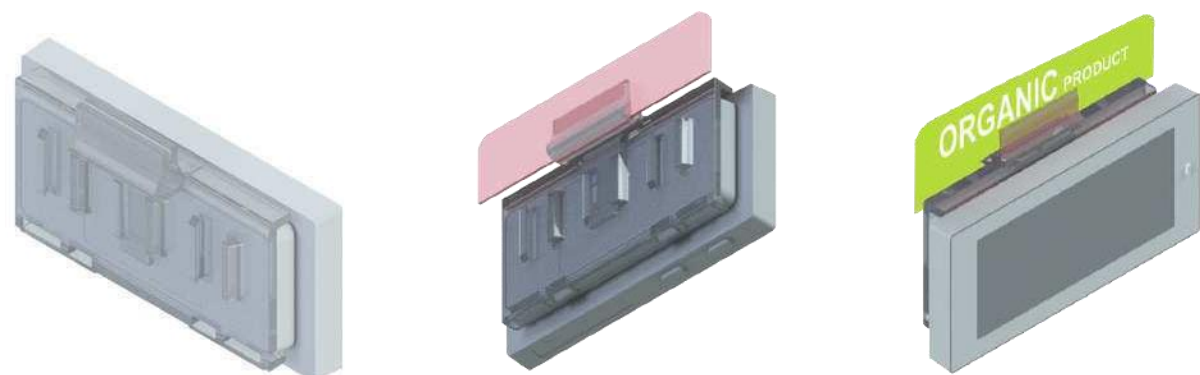


We can produce

any promotional supplement in size, shape, colors and with adapted design to your bussines electronic labels.

Highlight your sales, promotions, product eatures and everythig you want to get your coustomer's attention.

APPLICATION IN ALL SMALL SUPPORTS



APPLICATION IN THE ESL SOLUM 4.2 (STANDARD SIZE SUPPORT)



APPLICATION IN THE ESL SOLUM 6.0 (STANDARD SIZE SUPPORT)



APPLICATION IN THE ESL SOLUM 7.5 (STANDARD SIZE SUPPORT)



APPLICATION IN THE ESL SOLUM 11.6



contact us

 www.smartdigit.pt

 info@smartdigit.pt

 [+351 211 165 222](tel:+351211165222)



 SMARTDIGIT